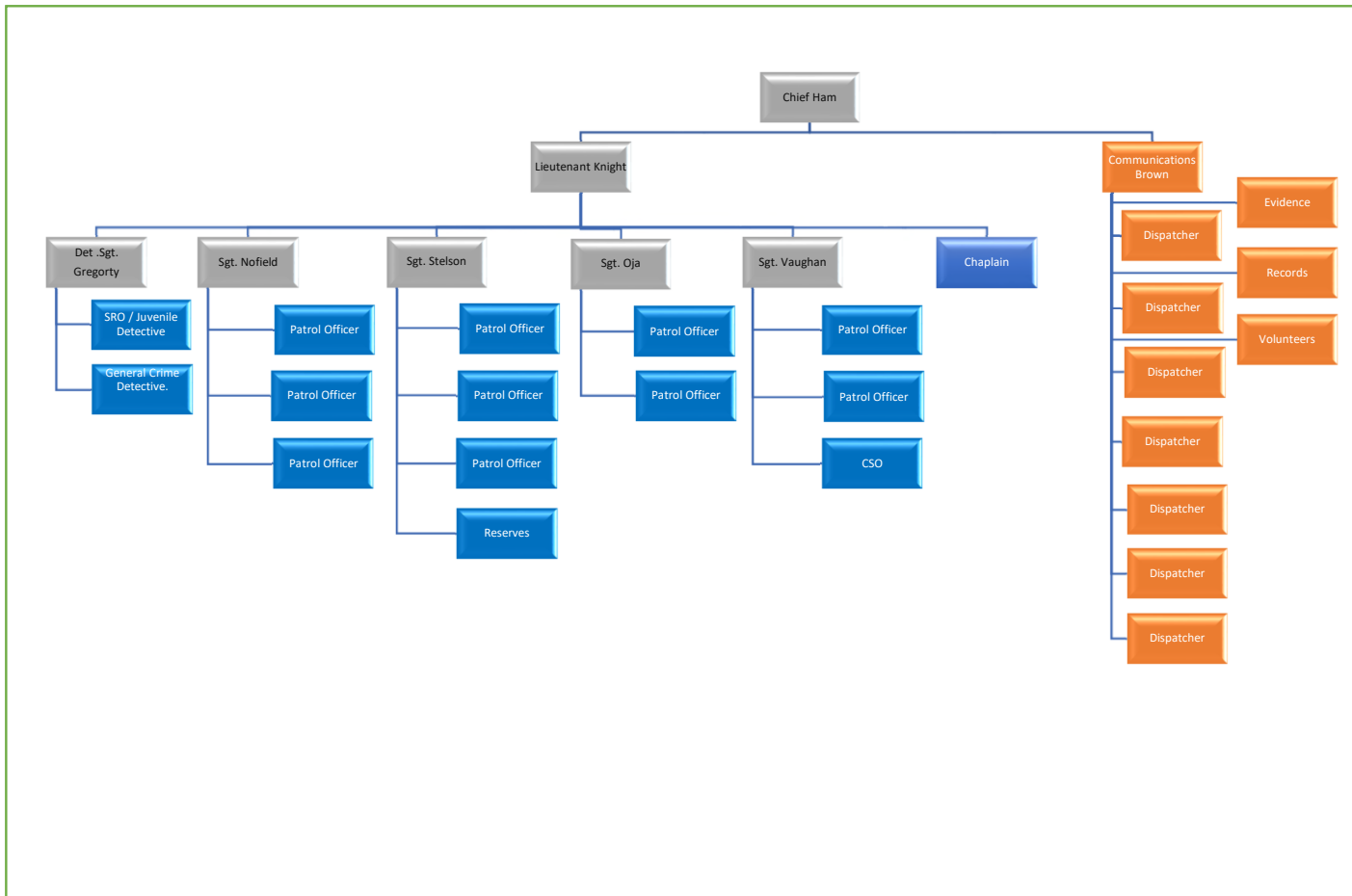






# Police Department Organizational Chart



- 28 FTE's
- 19 police
- 8 dispatch
- 1 CSO
- 3 reserves
- 1 volunteer
- 1 Chaplain

# Calls for service



	<b>2018</b>	<b>2019</b>	<b>2020</b>	<b>2021</b>	<b>2022</b>	5 Year % of Change
<b># of Calls</b>	9267	9350	9660	9989	9914	7%
<b>% of Change from Previous Year</b>	N/A	1%	3%	3%	-1%	



# Stats

# Part 1



	2018	2019	2020	2021	2022	Difference
<b>Homicide</b>	1	0	0	0	0	0%
<b>Rape</b>	5	4	6	1	1	0%
<b>Robbery</b>	7	4	3	4	8	100%
<b>Assault</b>	138	140	139	136	131	-4%
<b>Burglary</b>	43	29	32	27	27	0%
<b>Larceny</b>	328	280	309	332	421	27%
<b>Motor Vehicle Theft</b>	22	21	13	13	19	46%
<b>Arson</b>	3	8	0	6	1	-83%
<b>Counterfeiting / Forgery</b>	118	100	61	64	76	19%
<b>Embezzlement</b>	1	1	1	2	15	650%
<b>Stolen Property</b>	1	1	1	1	4	300%
<b>Vandalism</b>	185	139	198	253	217	-14%
<b>Weapon Law Violations</b>	25	24	13	15	19	27%
<b>Prostitution</b>	0	0	0	0	2	200%
<b>Sex Crimes</b>	11	7	13	7	3	-57%
<b>Drug Law</b>	77	63	38	33	40	21%
<b>Gambling</b>	0	0	0	0	0	0%
<b>Extortion</b>	0	0	0	0	1	100%
<b>Kidnapping</b>	1	4	1	0	2	200%
<b>All Other</b>	2	1	1	0	1	100%

# Part 2



	2018	2019	2020	2021	2022	Difference
<b>Assault</b>	20	23	37	14	19	36%
<b>Motor Vehicle Theft</b>	12	24	41	20	12	-40%
<b>Counterfeiting /Forgery</b>	0	1	0	0	0	0%
<b>Sex Crimes</b>	4	5	3	4	5	25%
<b>Family Offense / Non Violent</b>	6	4	6	2	2	0%
<b>DUII</b>	75	52	69	43	47	9%
<b>Tobacco</b>	2	4	2	2	0	-100%
<b>Liquor Law</b>	76	66	65	24	10	-58%
<b>Disorderly Conduct</b>	216	161	284	260	221	-15%
<b>All Other</b>	169	149	250	169	119	-30%
<b>Curfew</b>	3	2	1	2	4	100%
<b>Runaway</b>	1	3	9	1	0	-100%

# Traffic Stats



	2021	2022	Increase/Decrease
<b>Total Stops</b>	2880	2813	-2%
<b>Total Infractions</b>	596	656	10%
<b>Total Accidents Reported</b>	217	201	-7%
<b>Total Accidents Investigated</b>	151	137	-9%

# Use of Force 2022



## 2022 Use of Force

Total Arrest	UoF	Time Frame 1800-0600	Time Frame 0600-1800	Male*	Female*	Alcohol / Drugs	Armed	Taser	Shown	Deployed	Wrap	Pointed Firearm
306	82	53	29	62	20	55	12	23	21	2	9	18
	27%	65%	35%	76%	24%	67%	15%	28%	26%	2%	11%	22%



# Mental Health / Homeless



## Homeless

- 2,227 Homeless contacts in 2022, about 22% of all calls for service.

## Mental Health

- 600 Mental Health contacts in 2022, about 6% of all calls for service.



# Dispatch



911 Calls						
2017	2018	2019	2020	2021	2022	Total
7152	7183	7025	7414	10,527	12,058	60%
N/A	0%	-2%	6%	42%	15%	
Admin Calls						
2017	2018	2019	2020	2021	2022	Total
36089	34297	31818	32496	47,423	50,652	43%
N/A	-5%	-7%	2%	46%	7%	

# Dispatch



Fire	2018	2019	2020	2021	2022	Percent of Growth
Seaside	1407	1518	1497	1688	1936	34%
	N/A	8%	-1%	13%	15%	
Gearhart	441	441	443	572	655	44%
	N/A	0%	0%	29%	15%	
Cannon Beach	392	426	449	498	590	43%
	N/A	9%	5%	11%	18%	
Hamlet	94	146	107	170	143	72%
	N/A	55%	-27%	59%	-16%	
Total Calls Per Year	2334	2531	2496	2928	3324	38%
Total Percent of Growth By Year	N/A	8%	-1%	17%	14%	

# Dispatch



<b>Police</b>	<b>2018</b>	<b>2019</b>	<b>2020</b>	<b>2021</b>	<b>2022</b>	<b>Total Percent of Growth</b>
<b>Seaside</b>	9317	9350	9660	9989	9914	6%
	N/A	0%	3%	3%	-1%	
<b>Gearhart</b>	715	975	745	989	846	31%
	N/A	36%	-24%	33%	-14%	
<b>Cannon Beach</b>	2414	2919	4030	4407	4505	71%
	N/A	21%	38%	9%	2%	
Total Calls Per year	12446	13244	14435	15385	15265	21%
Total Percent of Growth	N/A	6%	9%	7%	-1%	

# Gone, but not forgotten, Sgt. Jason Goodding

